

A Woodworking Plan created by the

# **K** *Kyserike* *Kraftsman*

---

## Small TV Stand (13"x22")



A simple, but artistically pleasing design that can easily be completed in a weekend. This stand will hold most small flat panel TVs and includes either one or two areas for storage of an electronic device such as a Cable Set Top Box or Blu-Ray Player, freeing up space on a dresser or desk. The stand can “grow” with your needs. By just adding new sides and a shelf the stand can be upgraded from holding a single device to two devices.

This digital woodworking plan is available for purchase and immediate download from our website at [www.KyserikeKraftsman.com](http://www.KyserikeKraftsman.com)

# CONTENTS

|                                 |    |
|---------------------------------|----|
| Forward .....                   | 3  |
| Step-By-Step Instructions ..... | 4  |
| Material List .....             | 11 |
| Cut List Diagram .....          | 12 |
| Full Size Template .....        | 13 |
| Diagrams .....                  | 14 |

# FORWARD

Thank You for purchasing this woodworking plan from the Kyserike Kraftsman! I am sure that you will enjoy the product that you will be able to create by following these plans. Feel free to make modifications to the design to suit your needs. I welcome comments, suggestions, criticisms, kudos, and any communication that will help others that might be also using this plan. Send me an email at [TheKraftsman@KyserikeKraftsman.com](mailto:TheKraftsman@KyserikeKraftsman.com) or leave a comment on the website at [www.KyserikeKraftsman.com](http://www.KyserikeKraftsman.com).

Send me a photo of your completed project. I would love to see it and would be happy to add it to our Customer Showcase area of the Kyserike Kraftsman website!

I created this TV Stand to consolidate a cable box and Flat Panel TV and get back some dresser top space. The photos that you see are the actual product. The design is my own and as such may contain some minor flaws or typographical errors. Please look over the plans carefully as you create your project and if something just doesn't seem right or you need some clarification send me an email.

I can't stress the importance of using power tools safely while you are building this project. Make sure you are also using adequate eye and hearing protection to prevent injury.

I hope you have as much fun in building this as I did. Enjoy!

Regards,  
Chris

[TheKraftsman@KyserikeKraftsman.com](http://TheKraftsman@KyserikeKraftsman.com)

# STEP BY STEP INSTRUCTIONS

Follow the instructions below to create the TV Stand. The stand can be created as either a single high unit to hold one device, or a double high unit to store two devices within the unit.

If you are creating the double high TV Stand, the side pieces will be different and a shelf will need to be created. Follow the steps for the double high TV Stand where indicated.

If you choose to create the single high TV Stand, you can always upgrade to the double high by creating new side pieces and a shelf. The TV stand is assembled using knock-down hardware with no glue so that it can easily be upgraded as your electronic devices change.

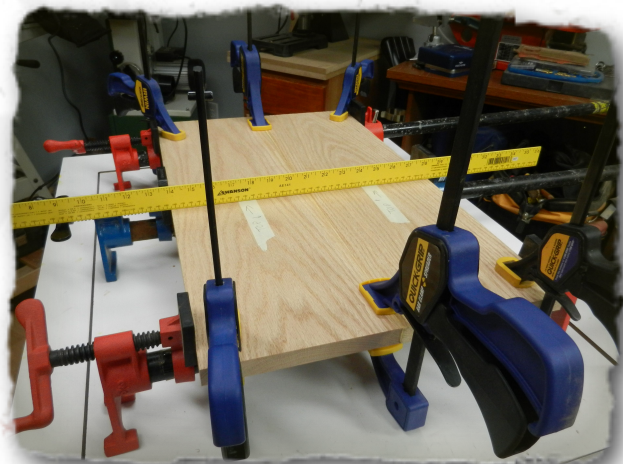
---

## 1. Prepare the Top (A) and Bottom (B)

The Top (A) and Bottom (B) parts are the same dimensions. Begin by first creating a board referred to as a blank, that is slightly larger than the overall dimensions of each of part.

To create a board large enough for the Top (A) blank, edge glue two 3/4" x 7 1/2" x 24" boards of stock together to create a board slightly larger in both width and length as described in the Material List and the Cut List Diagram. Use biscuits when edge gluing the stock to add strength to the joints.

Do the same to create a blank that will be used to form the Bottom (B).



*Waiting for the glue to dry on the edge glued blank for the Top (A).*

# FULL SIZE TEMPLATE

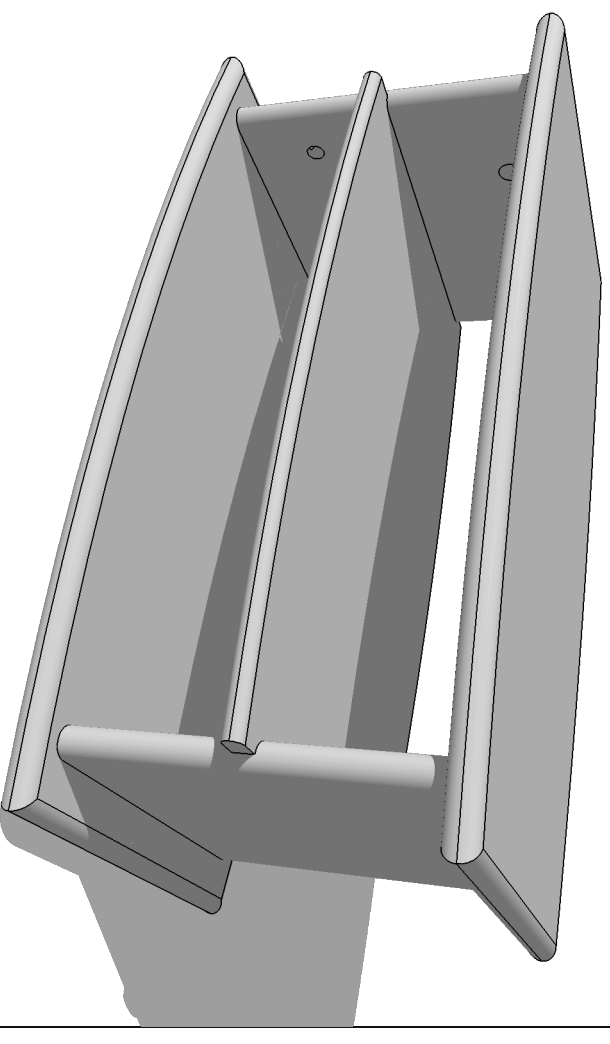
Included as part of this woodworking plan is a separate PDF document (TV\_Stand\_Template.pdf) that contains a full size diagram that can be used as a template for creating the bow front arc in the Top (A), Bottom (B), and Shelf (E). The PDF containing the template can be

printed at any office supply store (such as Staples) that has the capability to print on ARCH-D (24" x 36") paper.

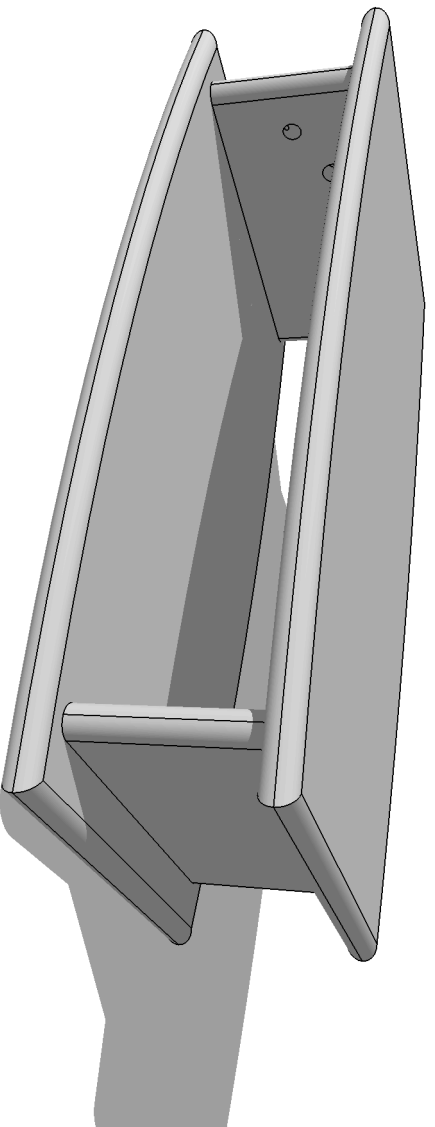


*Using a template bit to cut the bow arc on the Shelf (E)*

# Double High



# Single High



## Small TV Stand

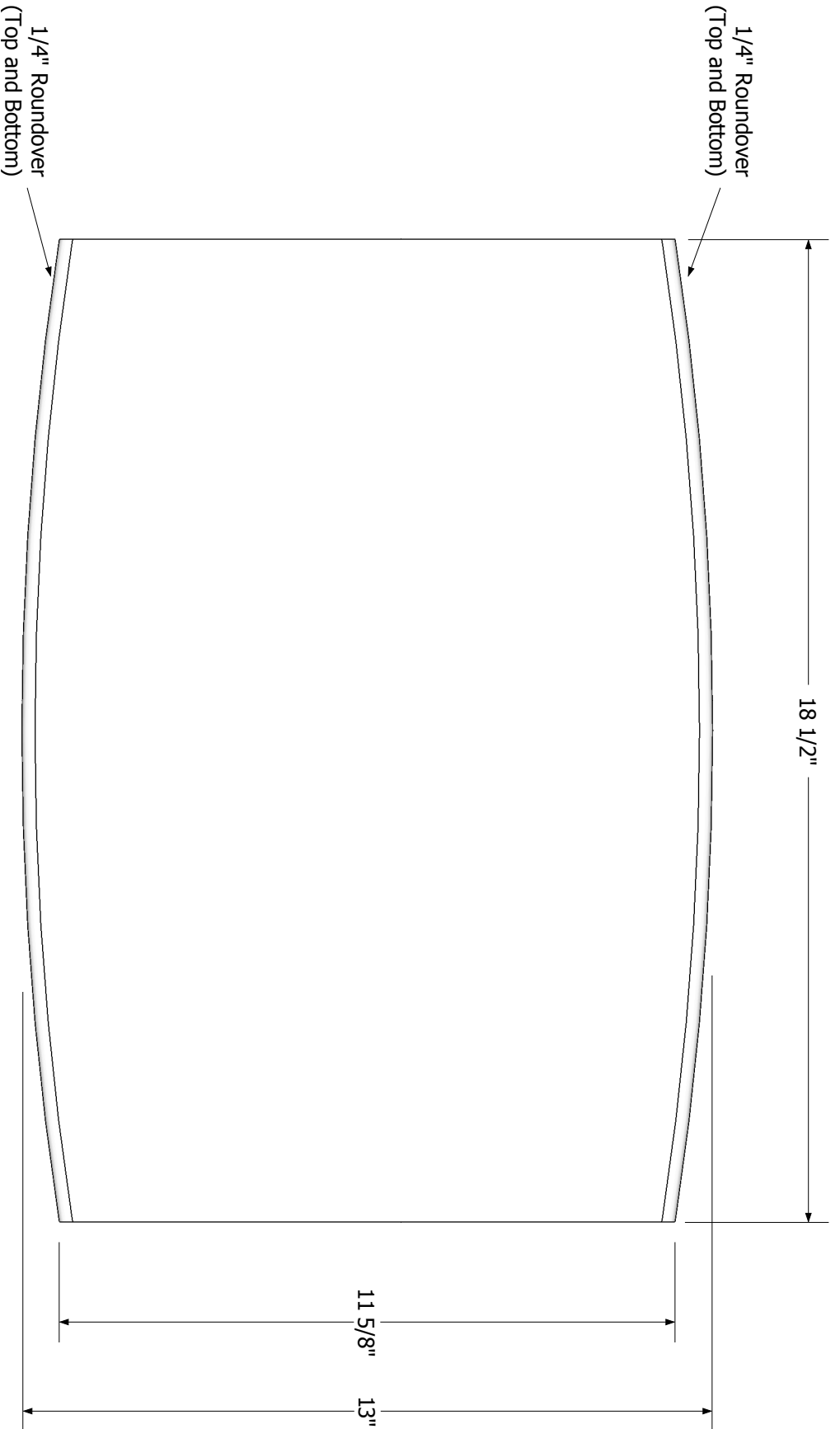


Kyserike Kraftsman LLC  
35 Kyserike Road  
Stone Ridge, NY 12484

Copyright © 2013 Kyserike Kraftsman LLC

Do-Not-Copy

April 1, 2013



Shelf (E)



Small TV Stand

Copyright © 2013 Kyserike Kraftsman LLC

Do-Not-Copy

A

005